

# **Crooked River Fishing Tips Central Oregon Flyfishers**

**By  
Frank Turek  
&  
Bill Seitz**

# Presentation

- Different than many presentations
  - Bunch of fish photos

# Presentation

- Different than many presentations
  - Bunch of fish photos - **nope**
  - Bunch of scenery photos

# Presentation

- Different than many presentations
  - Bunch of fish photos - **nope**
  - Bunch of scenery photos – **nope**
  - Bunch of fishing stories

# Presentation

- Different than many presentations
  - Bunch of fish photos - nope
  - Bunch of scenery photos – nope
  - Bunch of fishing stories - nope

# Presentation

- Different than most presentations
  - Bunch of fish photos - **nope**
  - Bunch of scenery photos – **nope**
  - Bunch of fishing stories - **nope**
- 1. Chuck and duck rig
- 2. Crooked River flows
- 3. Fishing chuck and duck
- 4. Favorite spots on Crooked River

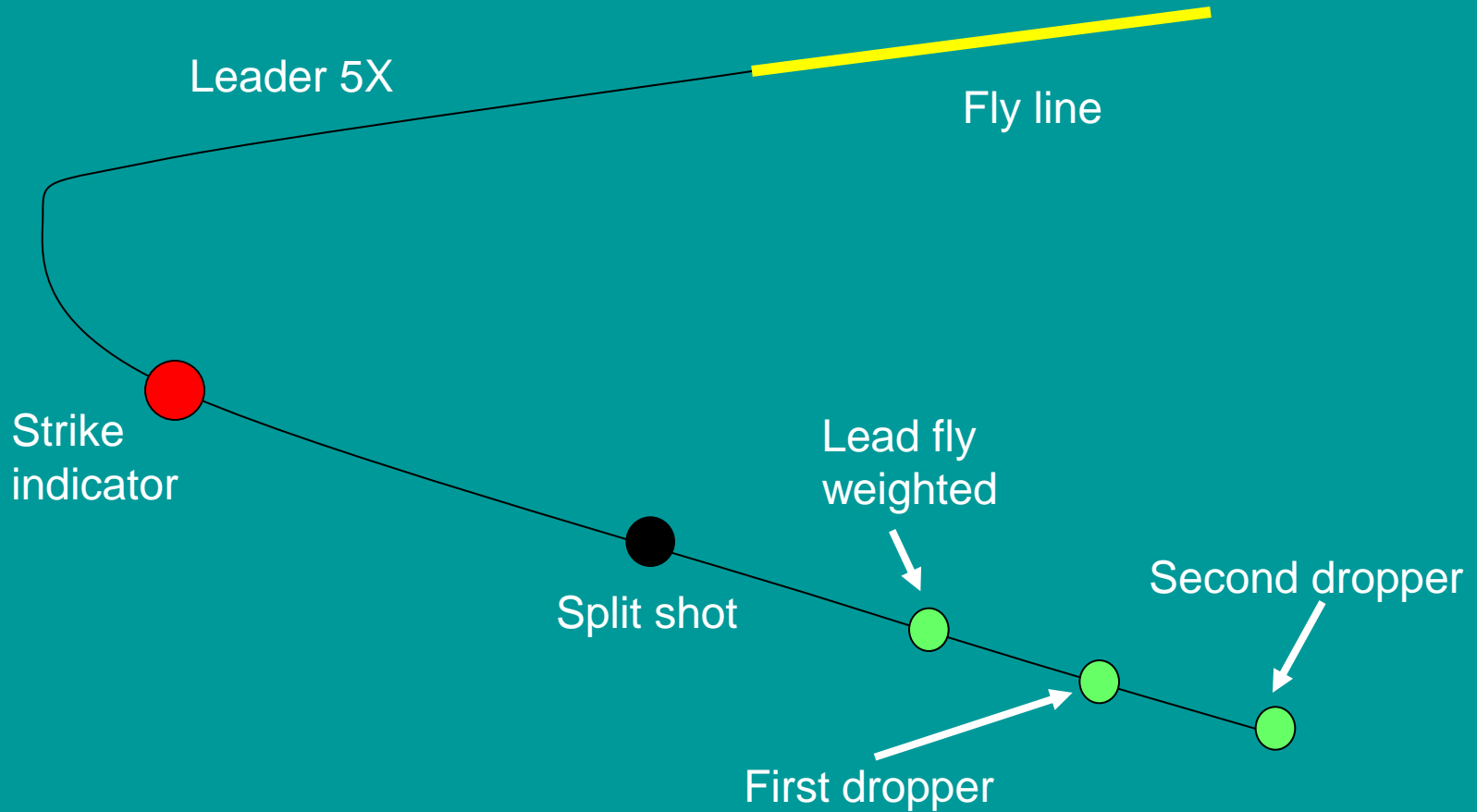
# Only Fish Picture



# Only Scenery Picture



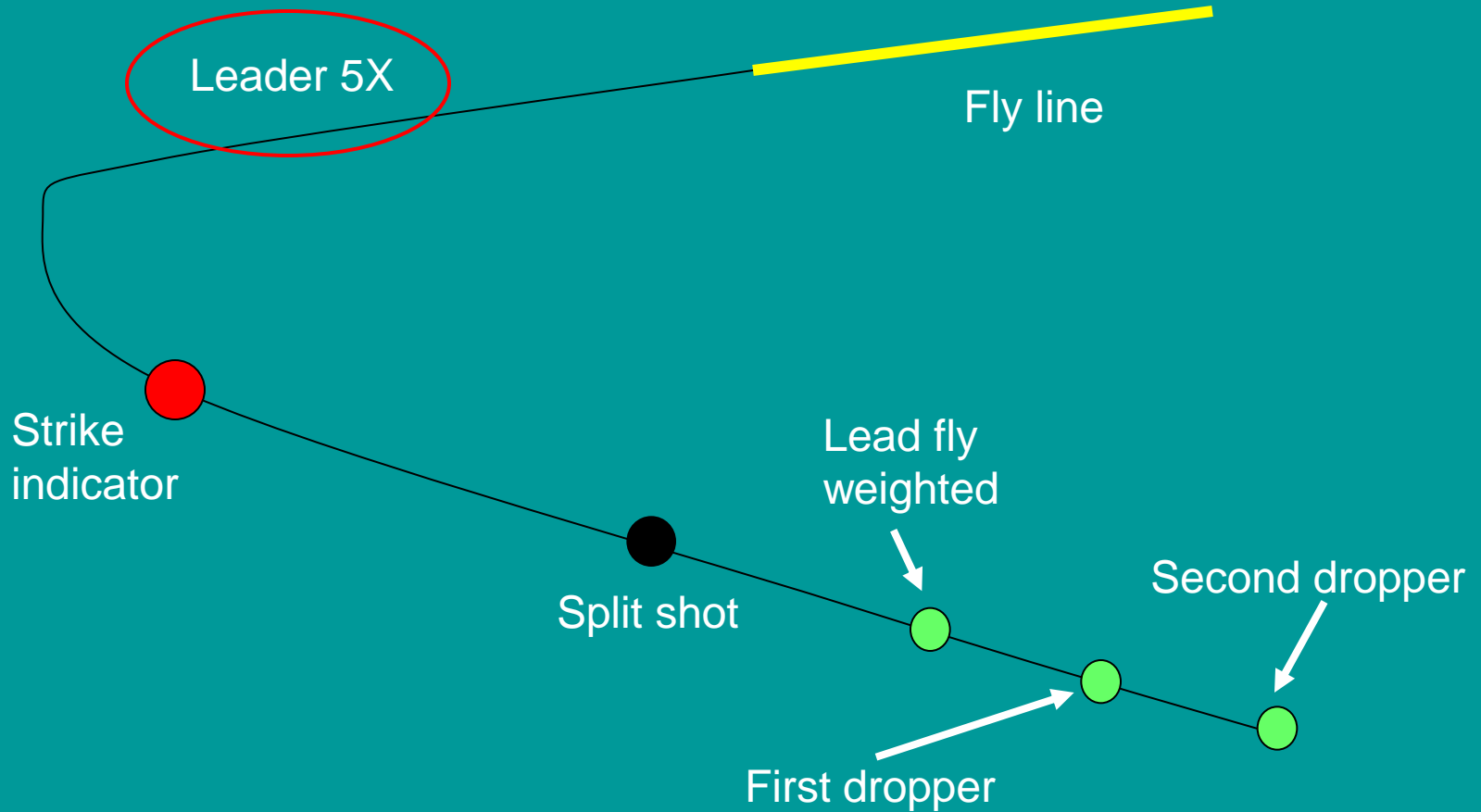
# 1. Chuck and Duck Rig



# Flies

- Chuck and duck uses subsurface flies
- **Dry fly fishing**
- I like #18 parachute BWO
  - Fish like it
  - I can see it

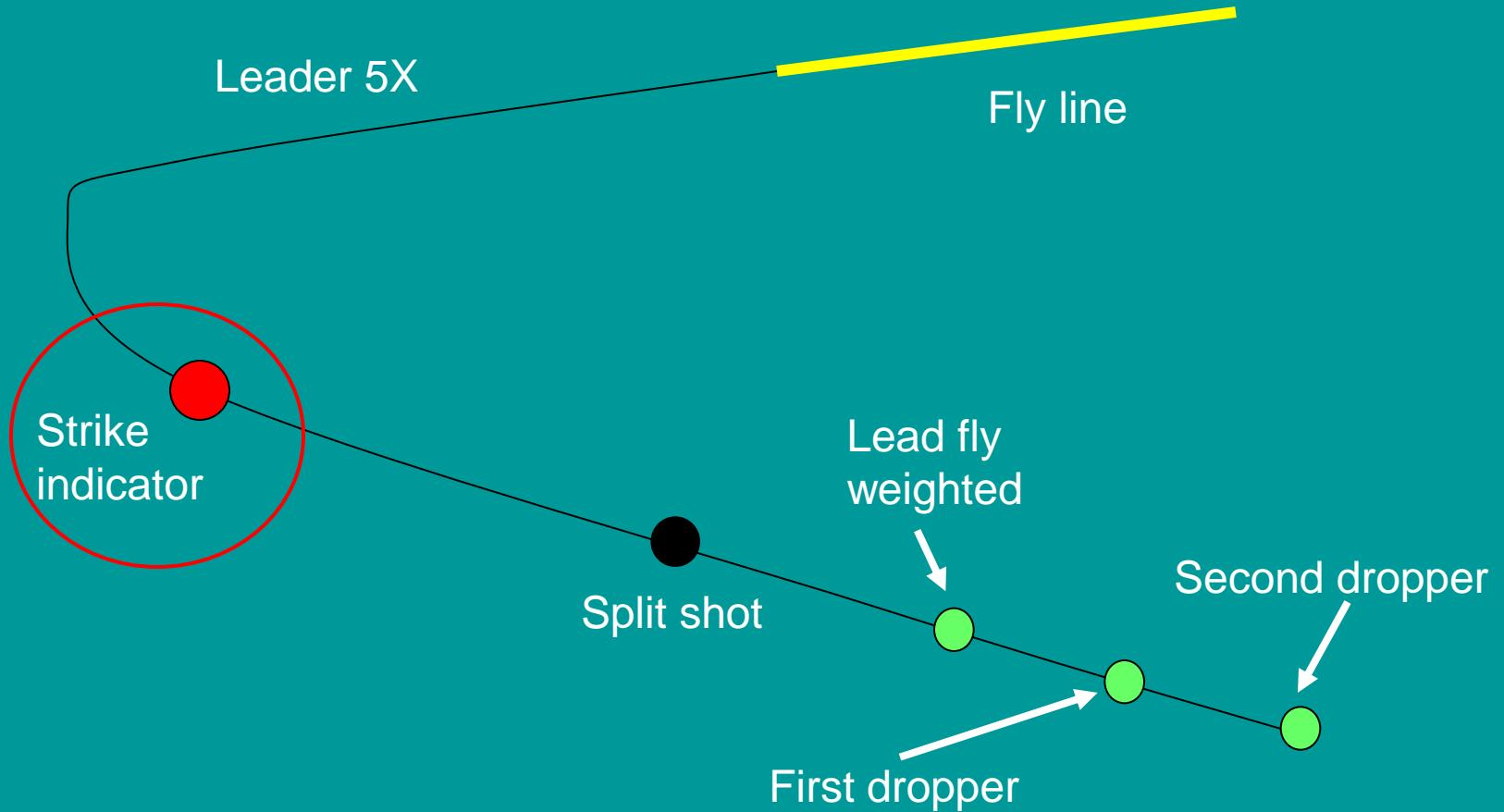
# Chuck and Duck Rig



# Leader

- I use 5x flurocarbon
  - No need to go finer or heavier
- 5X will fit through #20 eye
- Start with 9 ft tapered leader
- Try to keep length fly line to lead fly about 8 ft or so

# Chuck and Duck Rig



# Strike Indicator

- My favorite is corky
- Easy to adjust and I adjust often



# Strike Indicator

- Deep pools I set strike indicator about 5 feet above lead fly
- Shallow areas I set strike indicator about 18 inches above lead fly
- I change depth rather than flies
  - Deep pools change **12** inches
  - Shallows change **6** inches
- Should touch bottom about half the time

# Strike Indicator

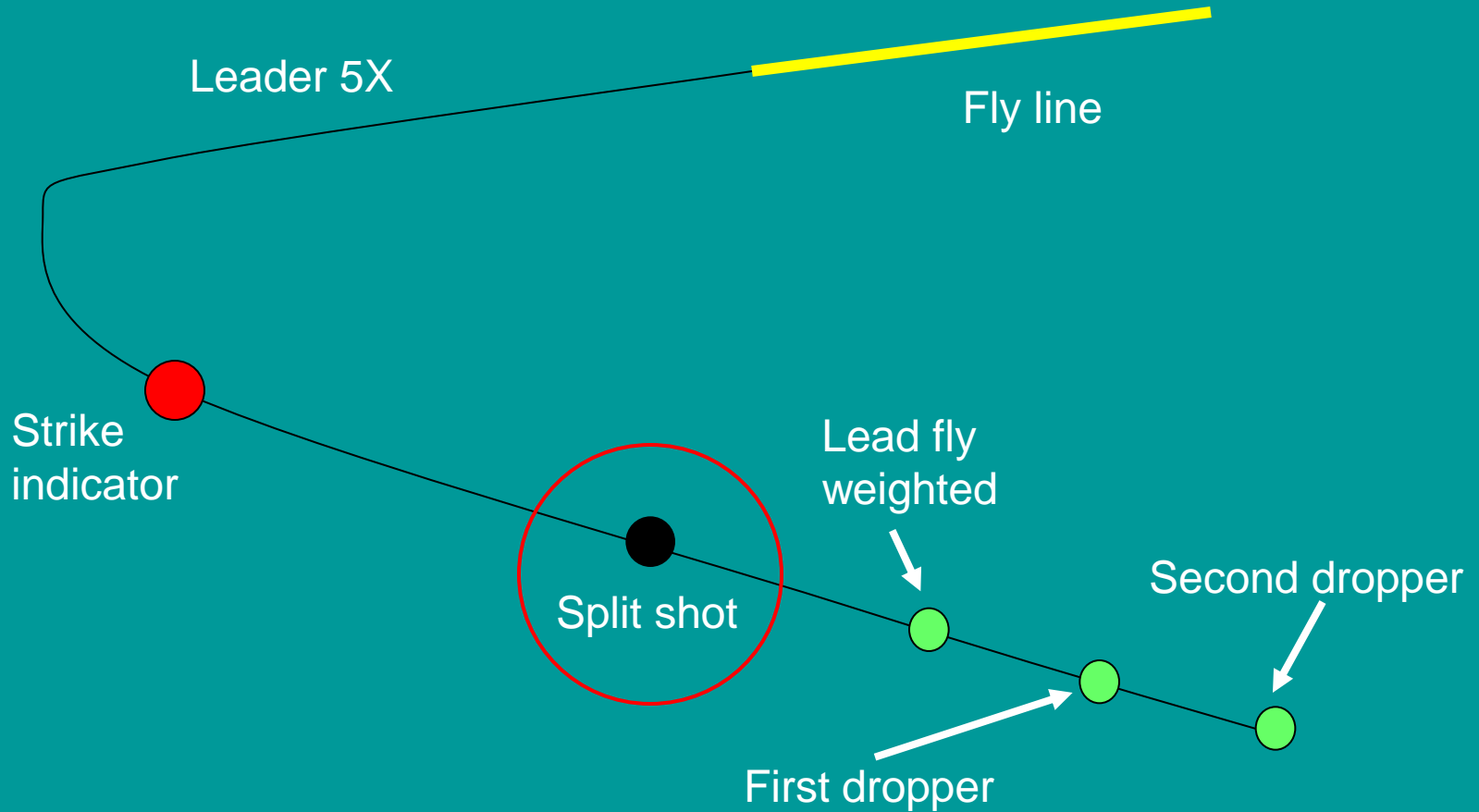
- Remember:

**IT IS AN INDICATOR NOT A BOBBER**

- If it moves or pauses or stops or does anything different than a normal drift

**STRIKE**

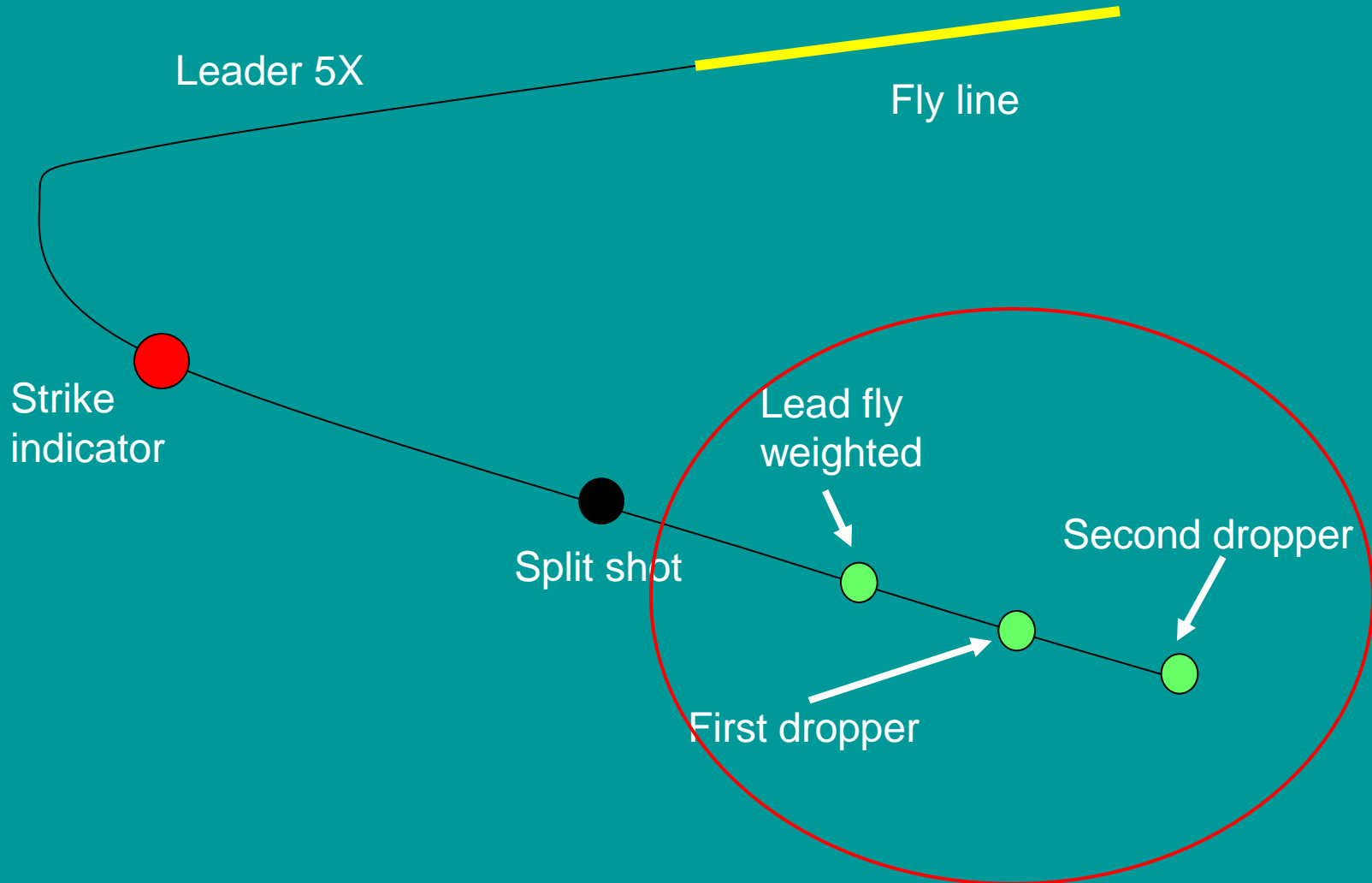
# Chuck and Duck Rig



# Split Shot

- I like
  - bb size in irrigation season
  - #1 or smaller shot in non irrigation season
- Put it about **12** inches above lead fly
- Should be called Slip Shot
  - Tends to slip down when casting
  - If it gets within **4** inches of lead fly - hits stop

# Chuck and Duck Rig



# Flies

- Lead fly - #14 weighted Peeking Caddis
- First dropper - #18 Olive Bead Head Scud
- Second dropper - #20 Happy Pulik or #20 Peacock fly
- Whitefish spawning season, egg pattern for second dropper
- About 12 inches between flies

# Fly Patterns



# For Fish That Hit Indicator



# Fly Setup

- I don't use fancy knots
- Improved clinch knot
  - Tie fly to tippet at eye
  - Tie droppers to bend of hook



## 2. Crooked River Flows

- Two main seasons of flow
  - Non irrigations season 60 to 80 cfs
  - Irrigation season 230 to 260 cfs
- Check out river in low flow
  - Learn pools, riffles, pockets and seams
  - Learn where fish lie
  - Learn where to wade and cross
  - Apply that in high flows

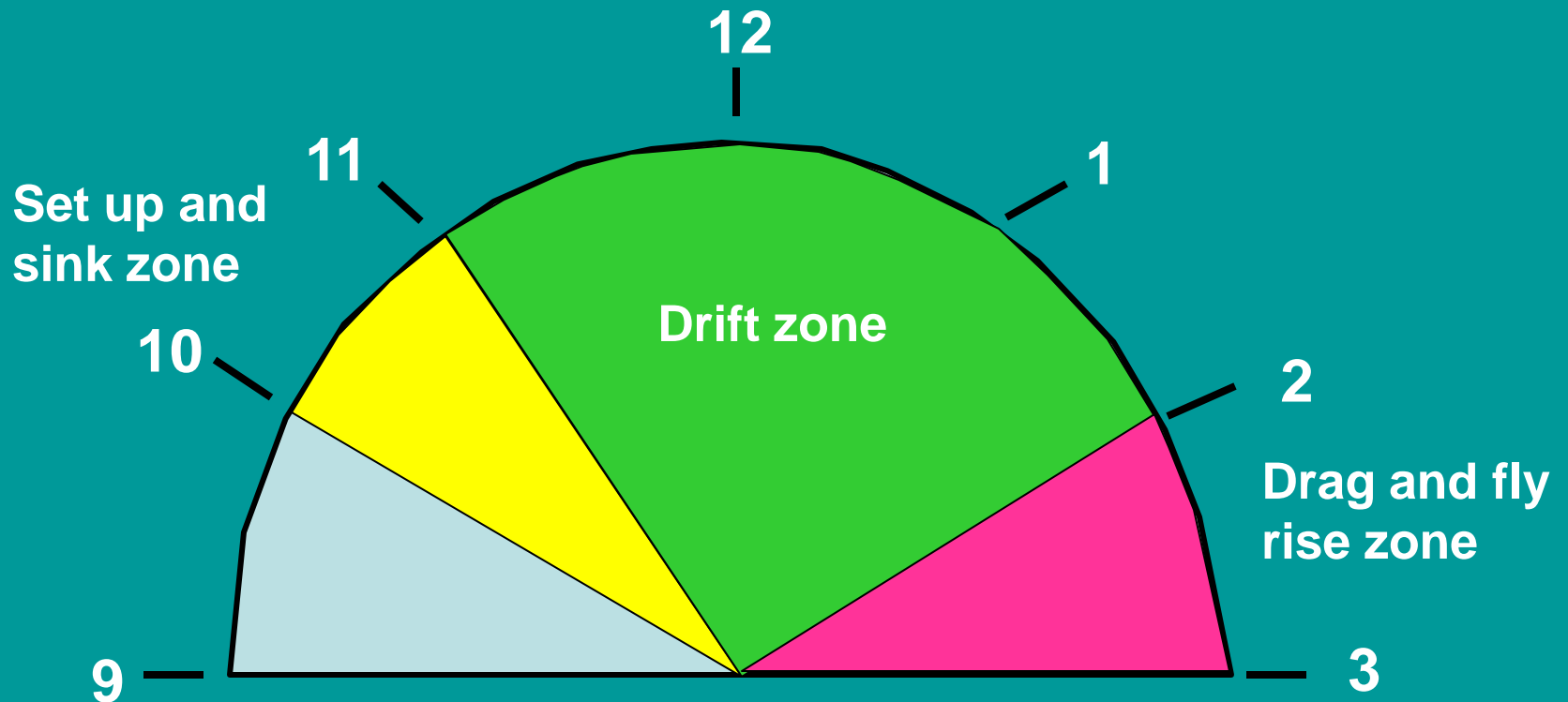
# Crooked River Flows

- Remember cfs is a volume
- Velocity varies with depth and width of channel
- Consider a river section 2 feet deep, 50 feet wide
- If flow doubles - 100 to 200 cfs then velocity doubles BUT force against you quadruples

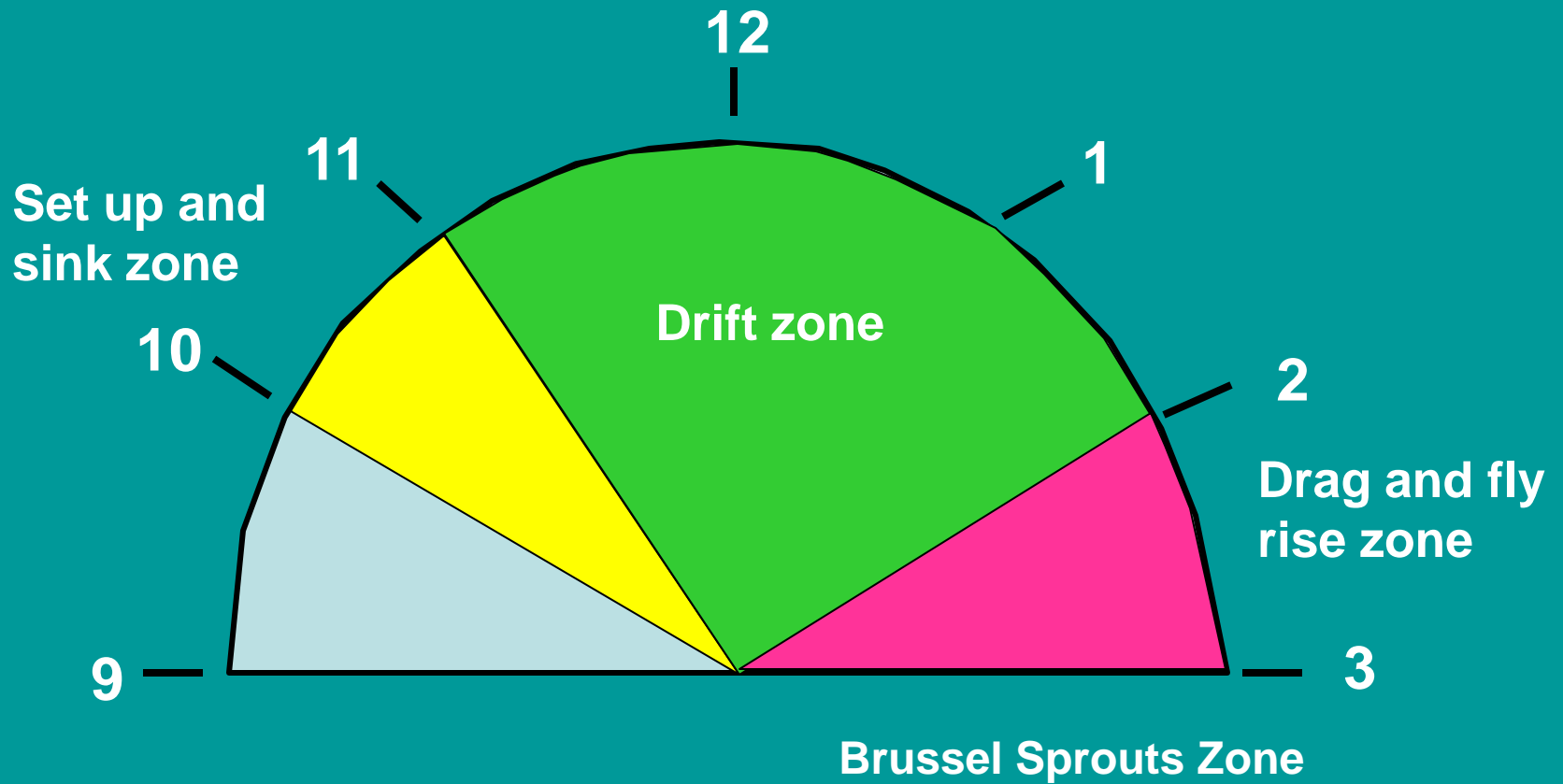
# 3. Fishing Chuck and Duck

- Because of road most folks fish with flow from left to right

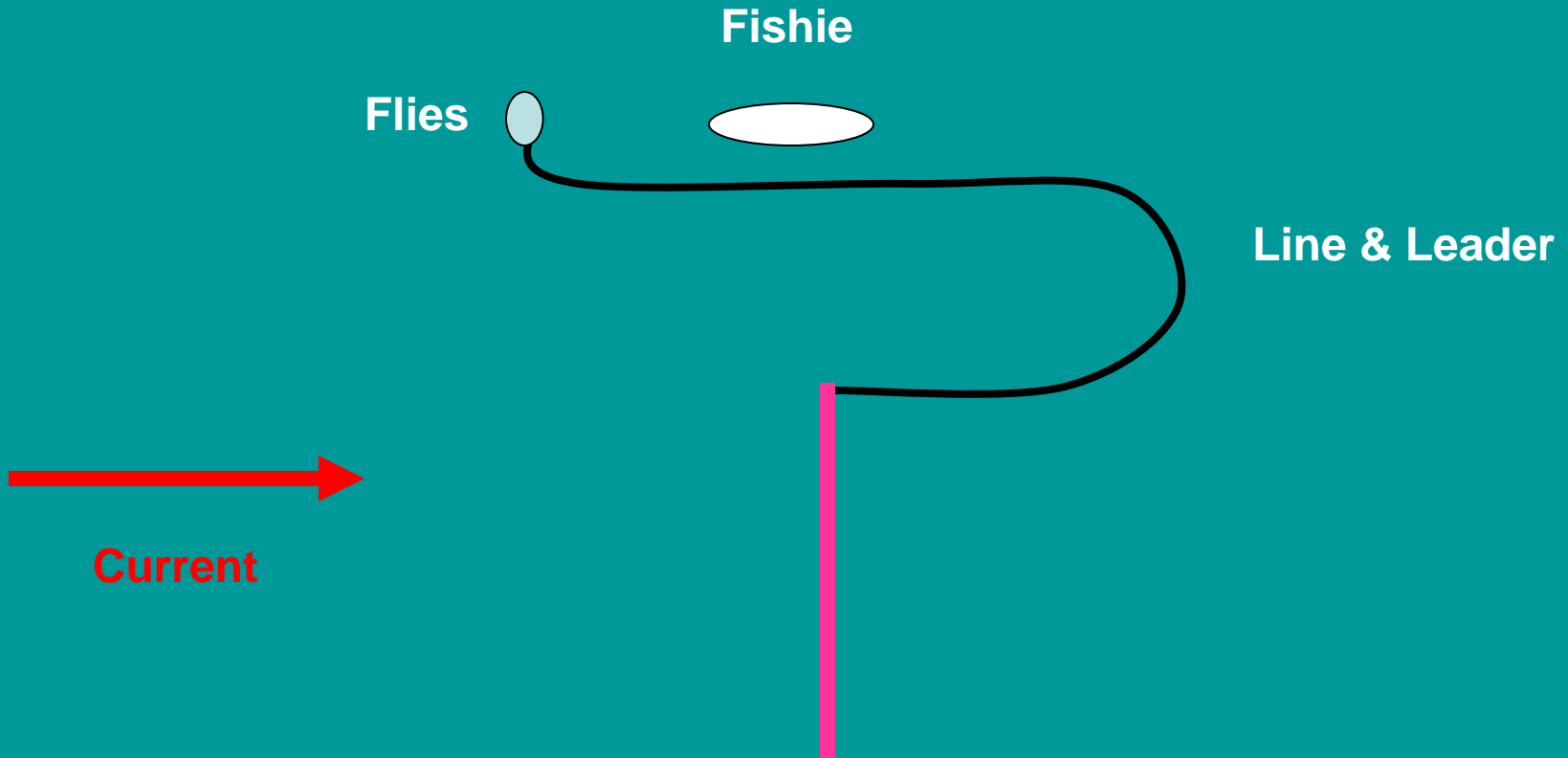
# Fishing Chuck and Duck Deep Pools and Runs



# Fishing Chuck and Duck Deep Pools and Runs

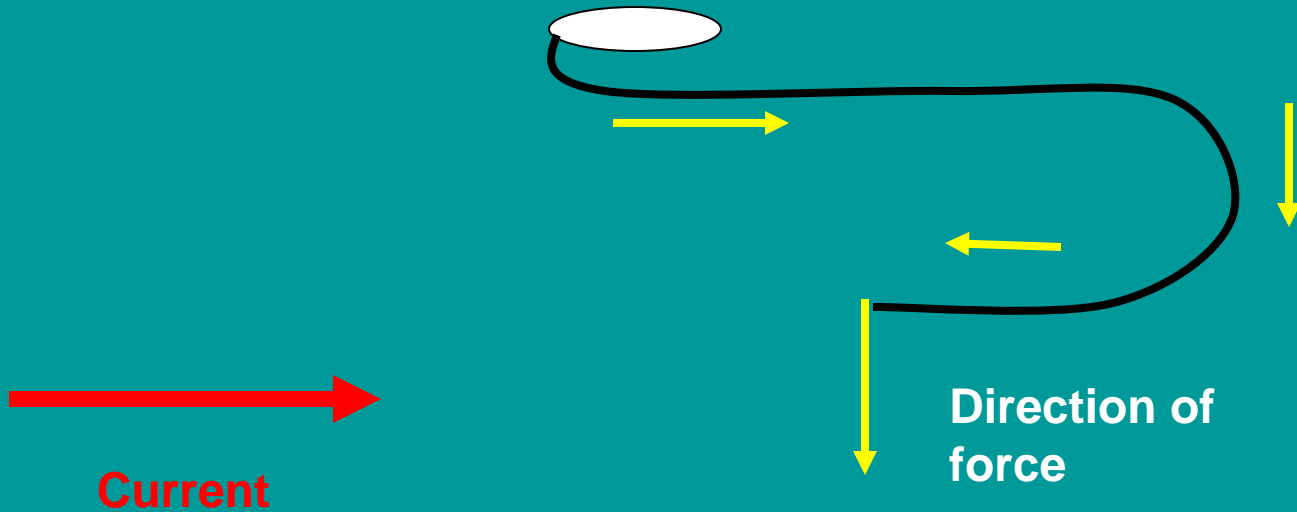


# Drift with Drag



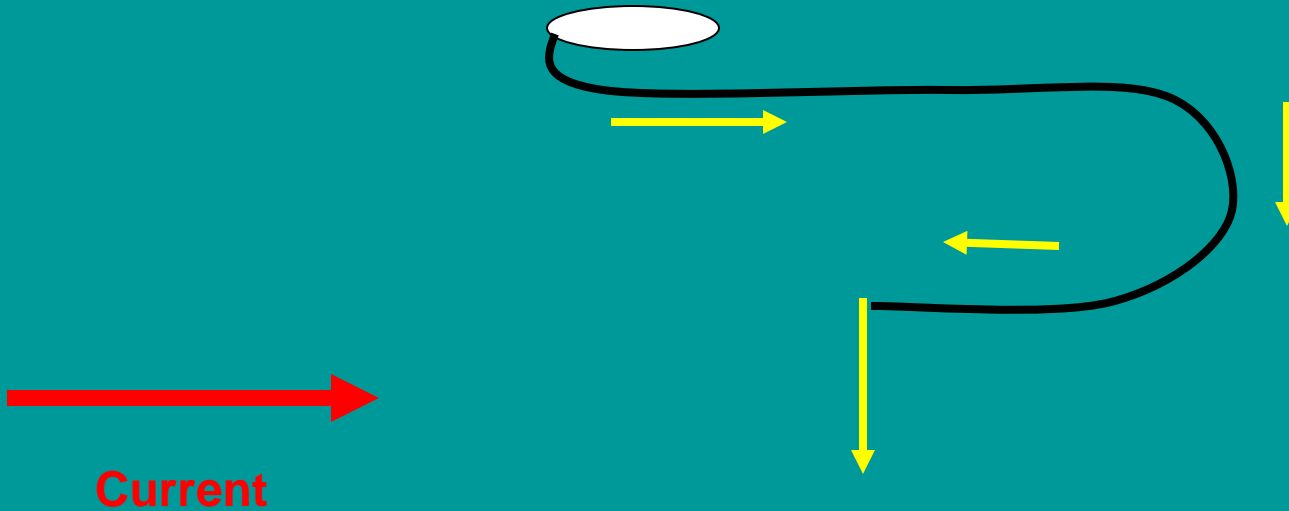
# Drift with Drag

Fishie



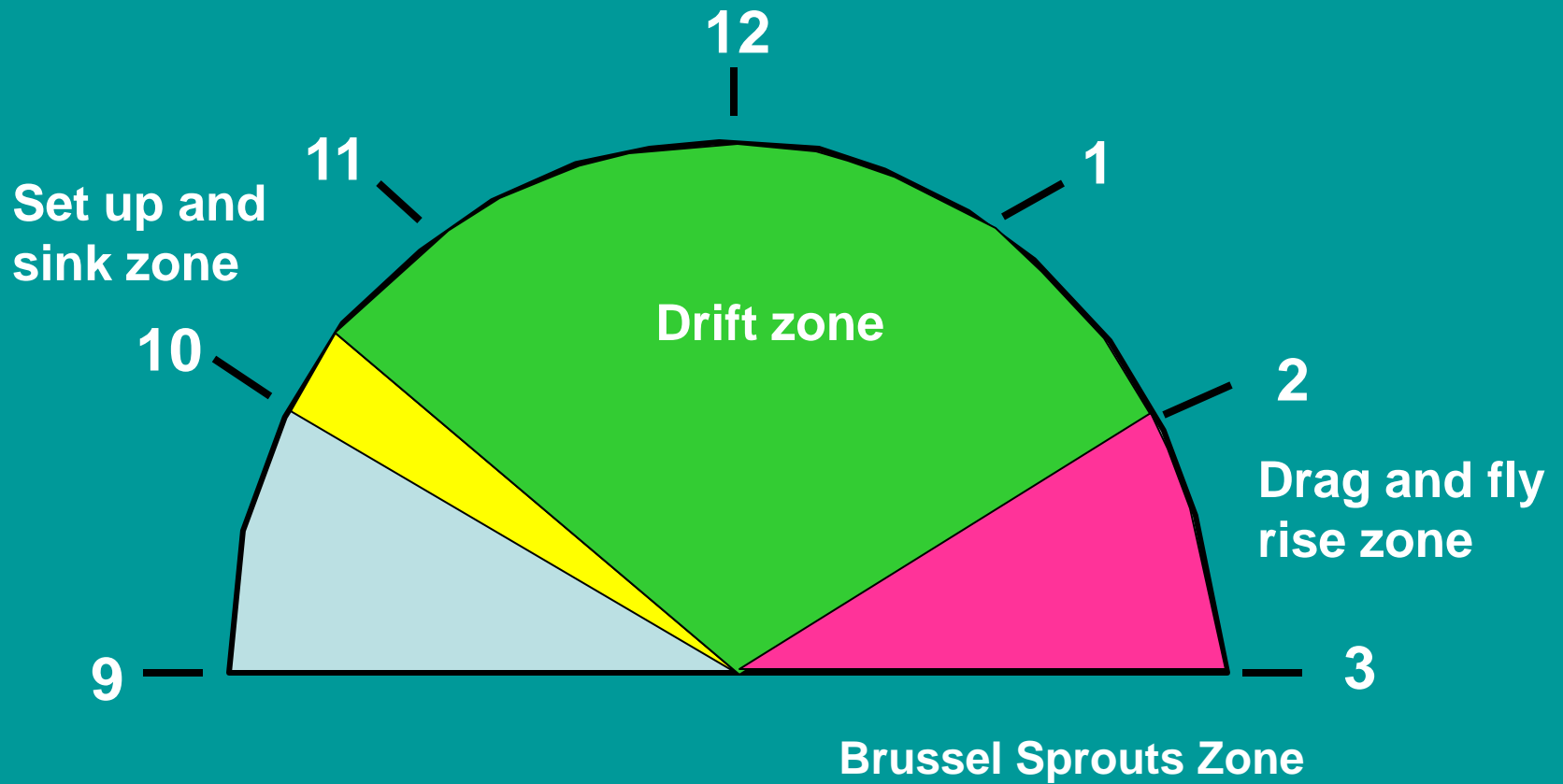
# Drift with Drag

Fishie



Result = Good hook set

# Fishing Chuck and Duck Shallow Riffles and Small Pools



# 4. Favorite Fishing Spots

- Big Bend to Lower Palisades
- Greater percentage of rainbows to whitefish
- Downstream greater percentage of whitefish

# Big Bend Area



# Big Bend Area



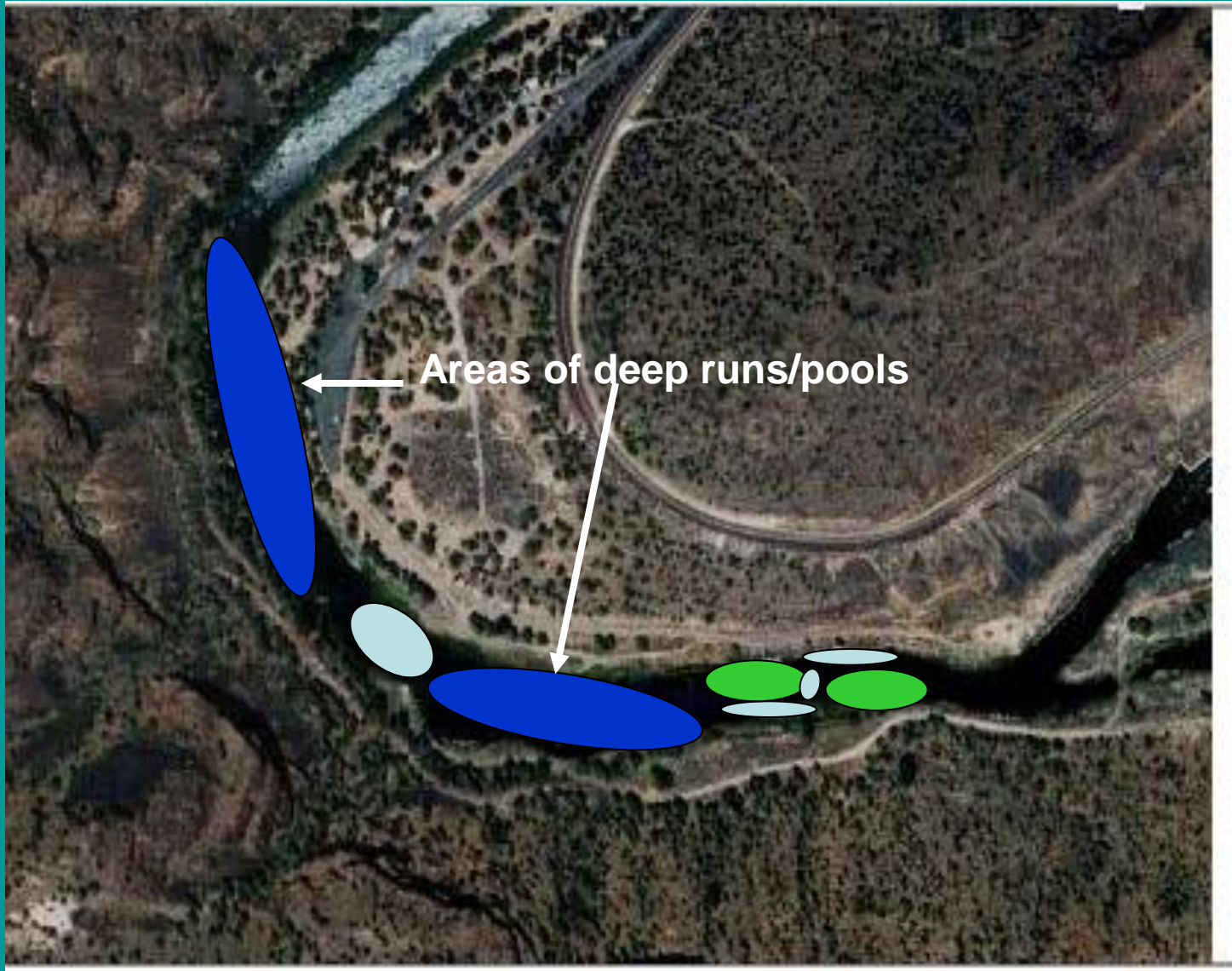
# Big Bend Area



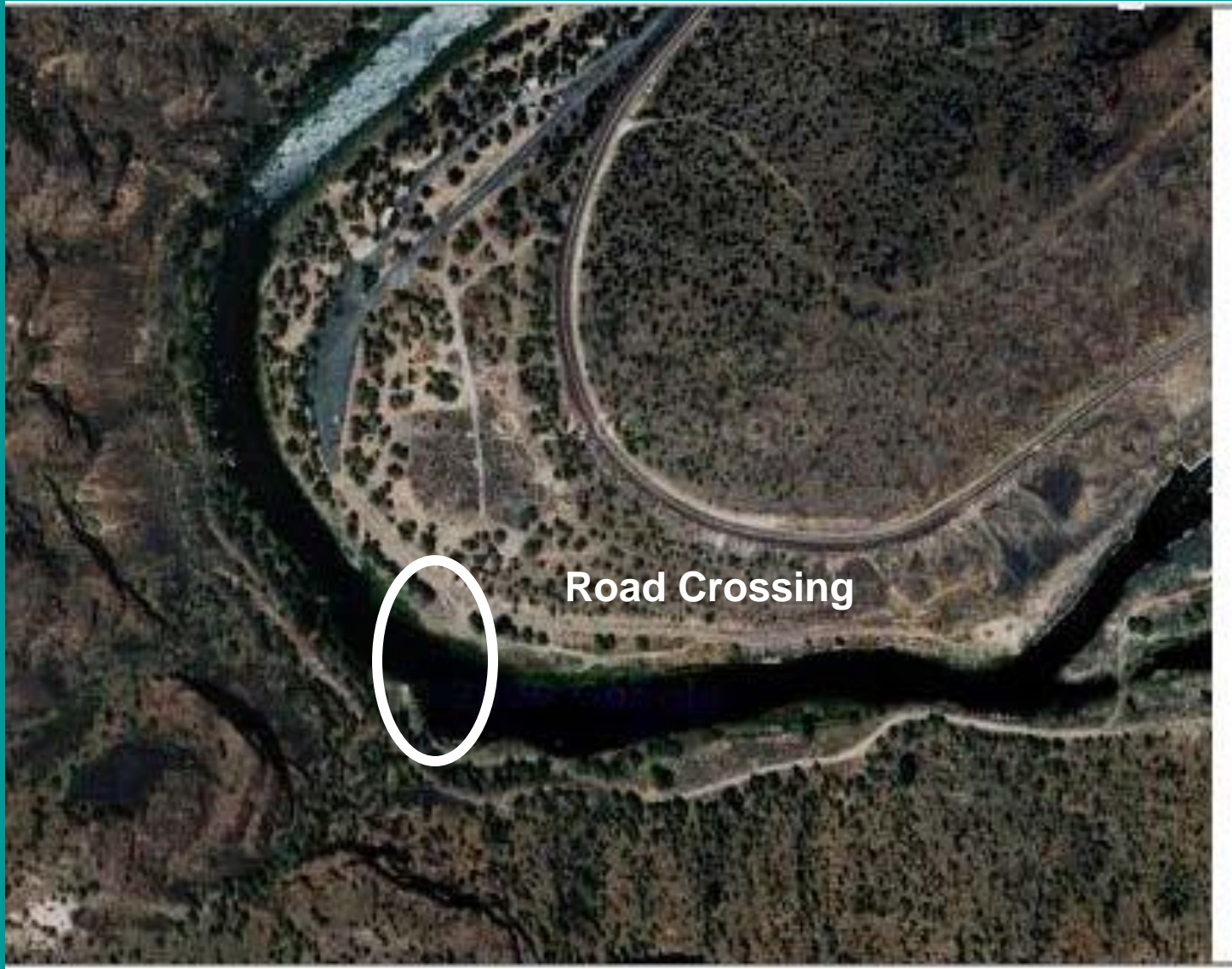
# Big Bend Area



# Big Bend Area



# Big Bend Area



# Chimney Rock



# Chimney Rock



# Chimney Rock



# Chimney Rock



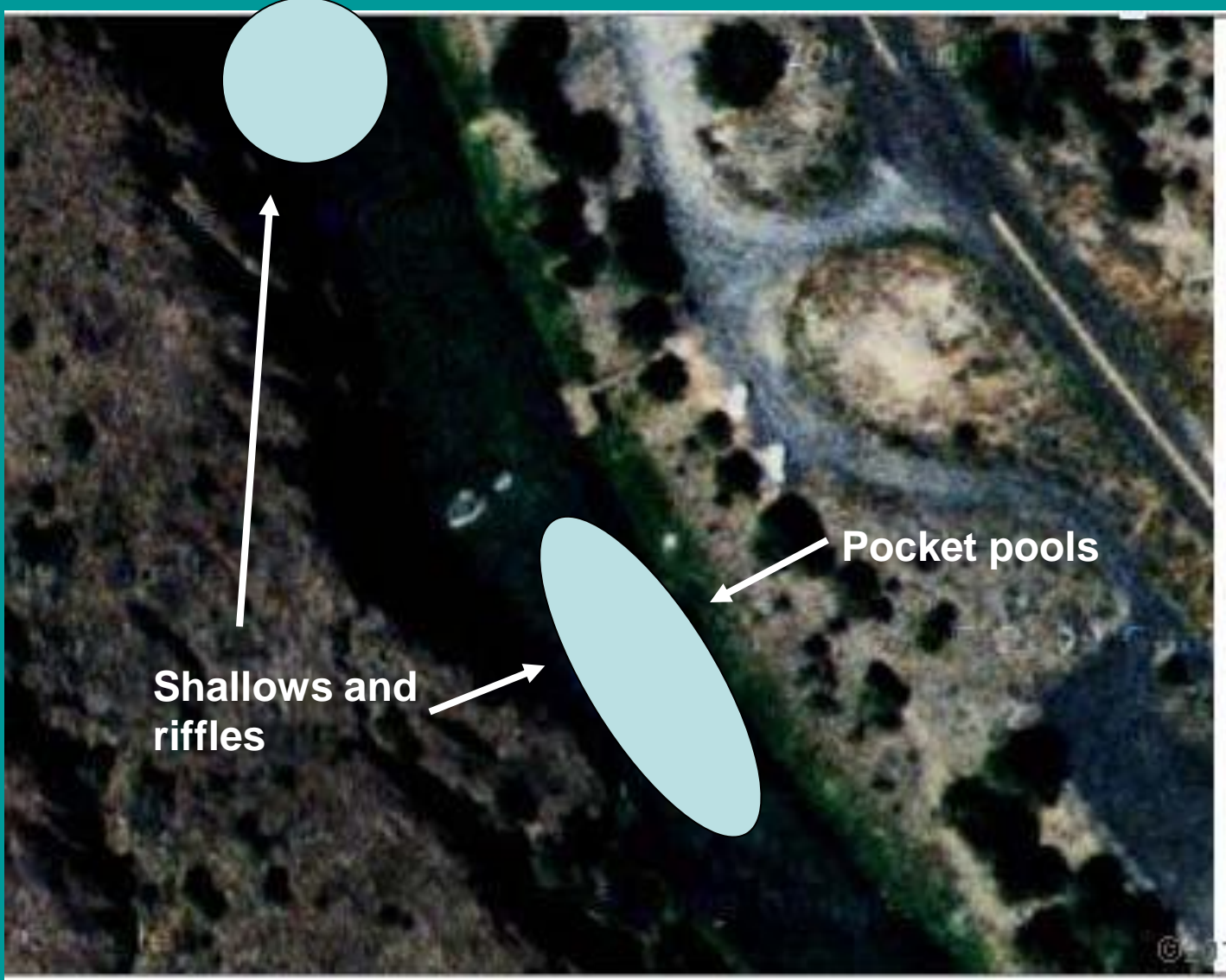
# Chimney Rock



# Chimney Rock



# Chimney Rock



# Chimney Rock



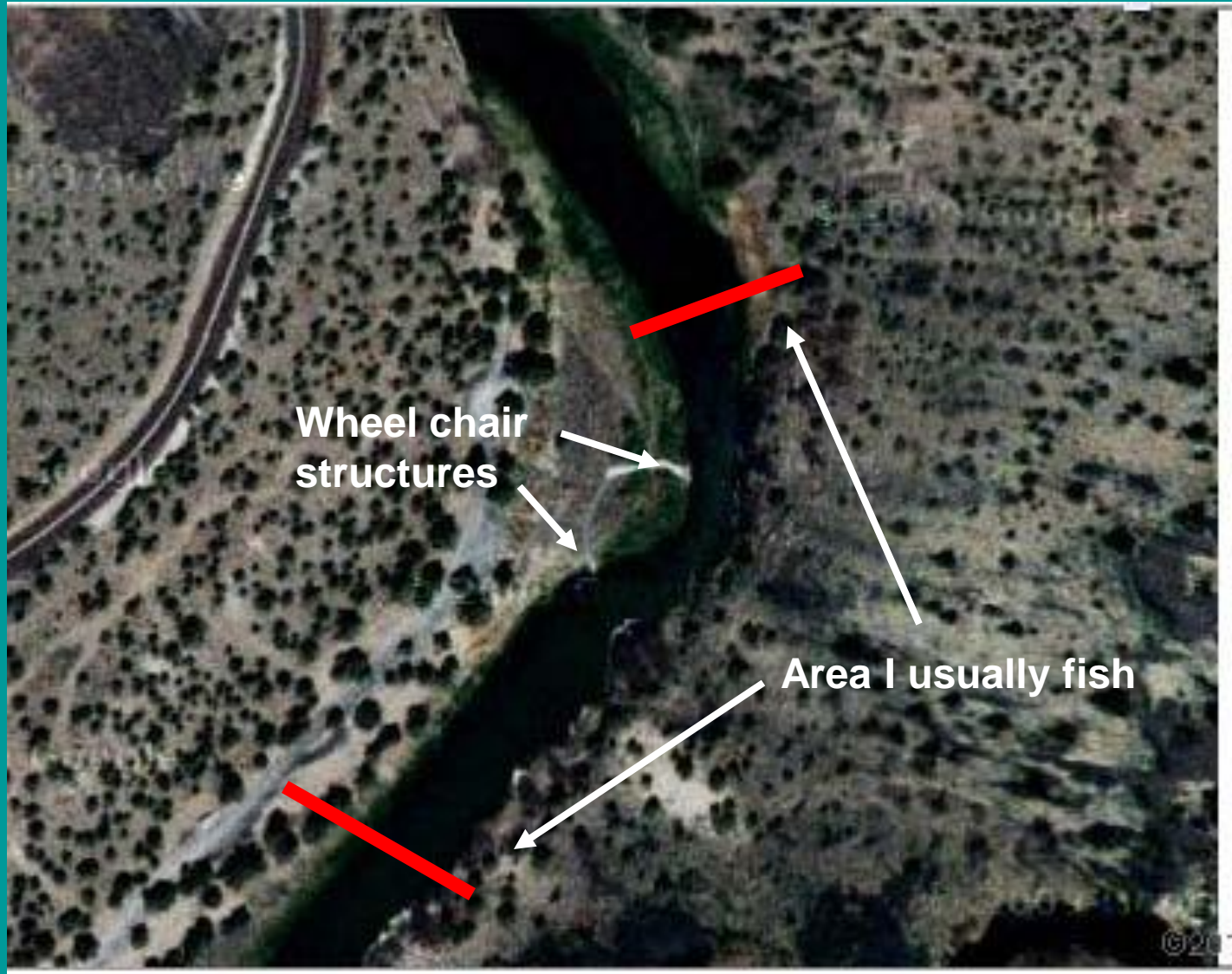
# Chimney Rock



# Lower Palisades



# Lower Palisades



# Lower Palisades



# Lower Palisades



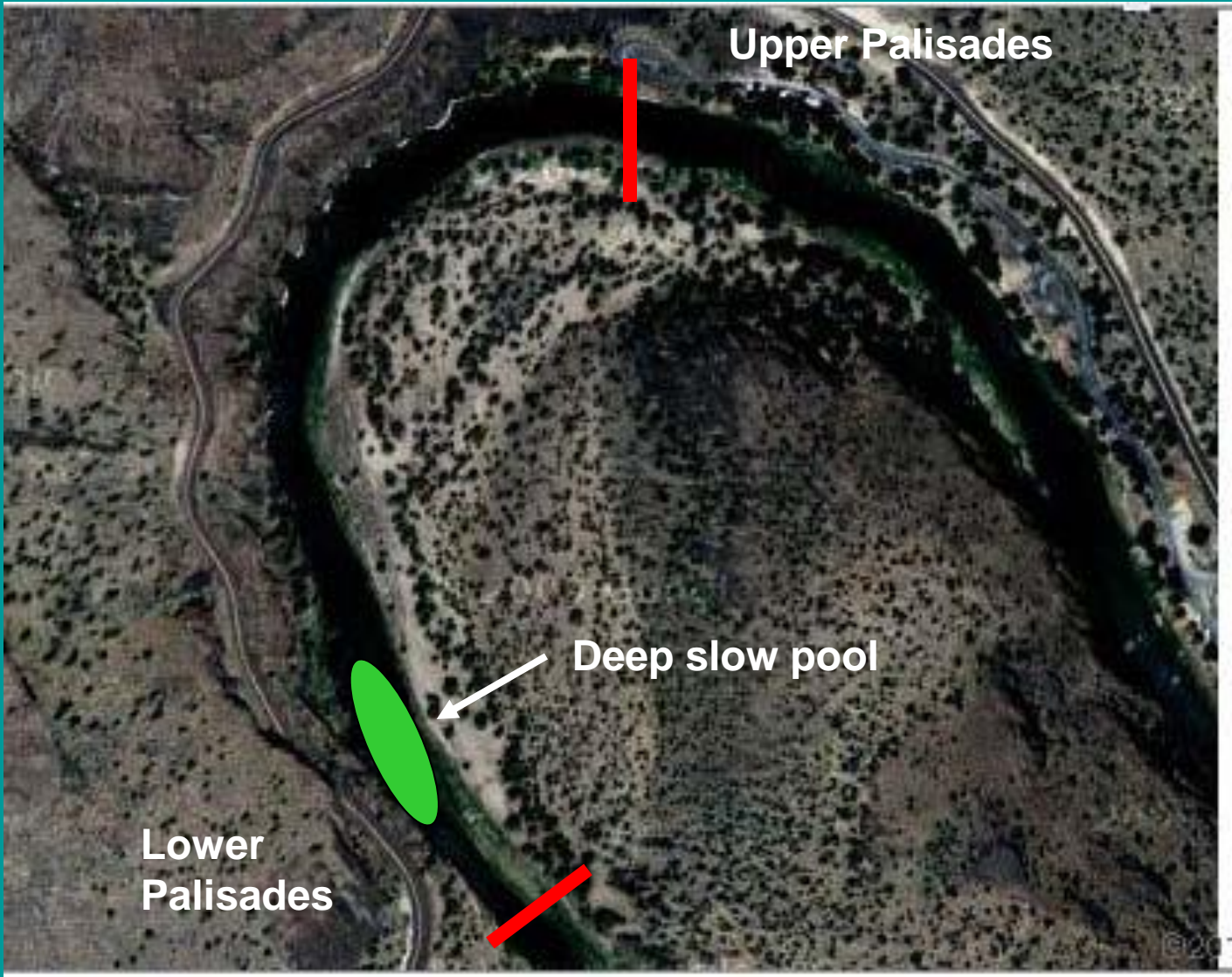
# Lower Palisades



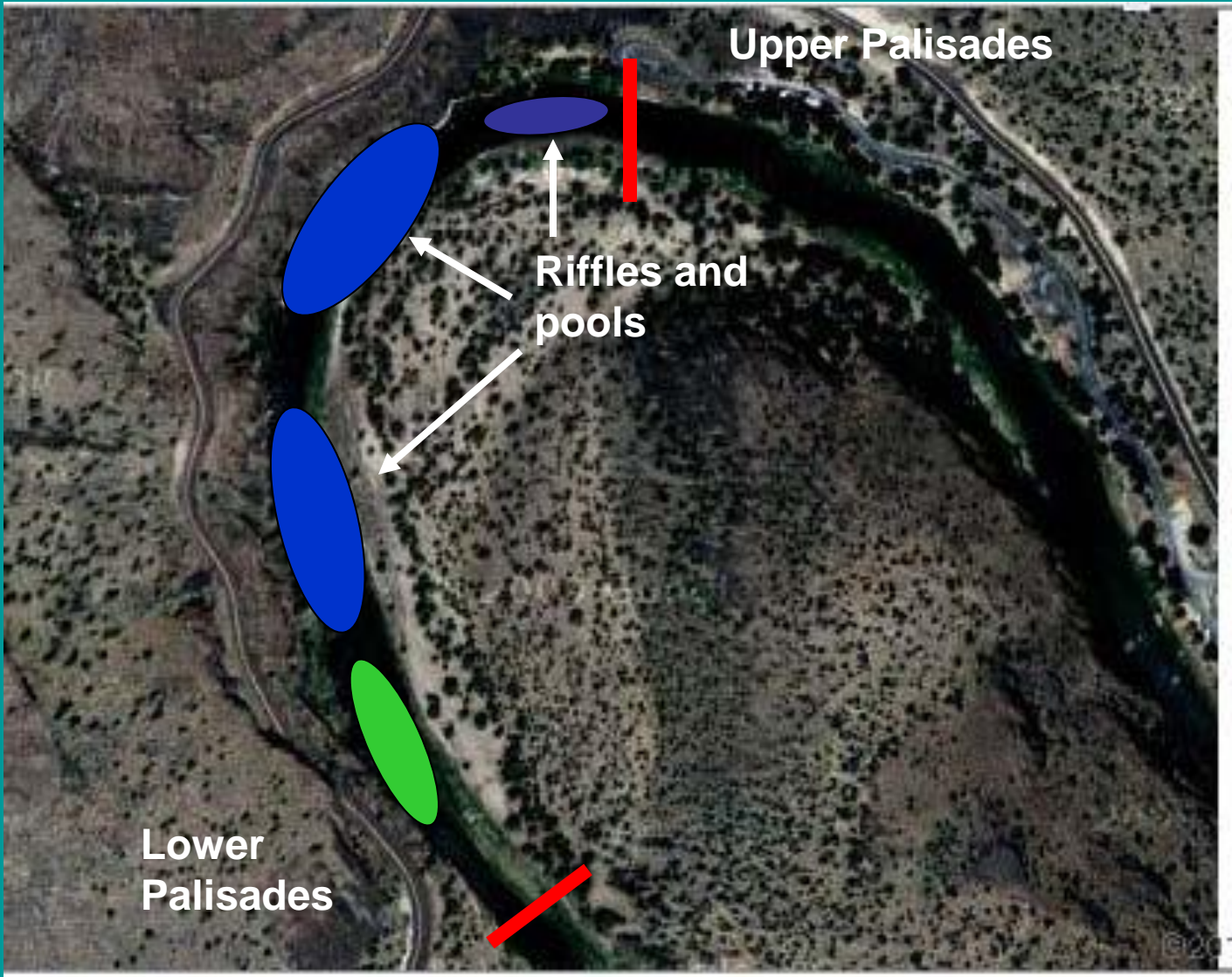
# Palisades Canyon Area



# Palisades Canyon Area



# Palisades Canyon Area



**Questions Later**

**and now  
here's  
Bill**